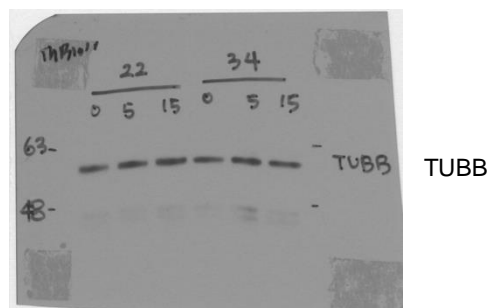
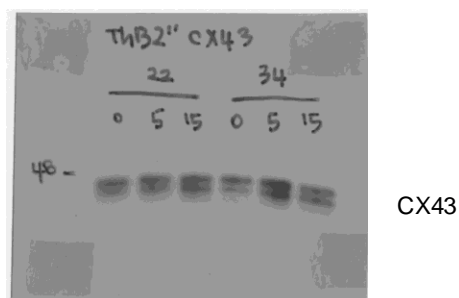


For ease of internal interpretation, we label "Time post sync (hr) 8 hr" as CT0. Therefore, the values 22 and 34 written on the scan file correspond to 30 and 42, respectively, in terms of "Time post sync (hr)."

Time post sync (hr)				Time post sync (hr)			
30				42			
ATP (min)				ATP (min)			
0 5 15 0 5 15				0 5 15 0 5 15			



**Figure 6-source data 3** Original membranes corresponding to Figure 6, panel C, were used, with Gangnam-stained molecular weight markers.